

DOCUS MINI

26-11-2015

1.0

PAR16 max. 15W | GU10 | 220-240VAC | 50-60Hz

CE IP20 960°C 0,9m

white texture	300320W0
aluminium brushed	300320L0
gold	300320G0
copper	300320P0
black texture	300320B0

OPTIONAL
for PAR16 lamps see our catalogue

2.0

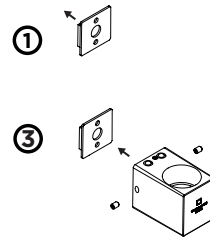
2xPAR16 max. 15W | GU10 | 220-240VAC | 50-60Hz

CE IP20 960°C 0,9m

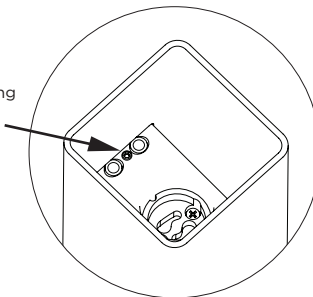
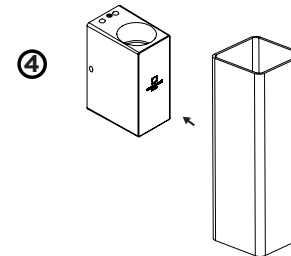
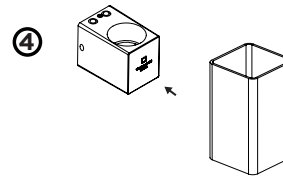
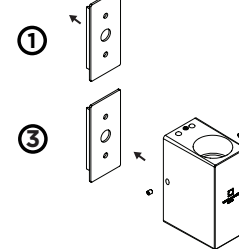
white texture	301320W0
aluminium brushed	301320L0
aluminium brushed	301320G0
copper	301320P0
black texture	301320B0

OPTIONAL
for PAR16 lamps see our catalogue

DOCUS MINI 1.0

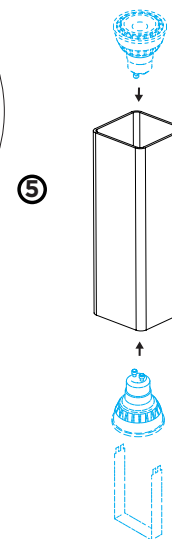
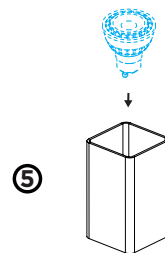


DOCUS MINI 2.0

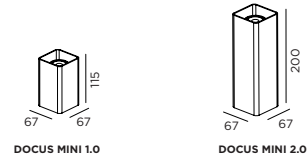


FOR OPTIONAL LOCKING:

* Lock the cover by unscrewing the grub screw app. 3mm. Then the cover is stable.



DIMENSIONS



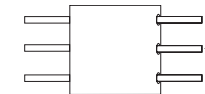
MOUNTING INSTRUCTION

- 1 Mount the base plate on the wall

POWER CONNECTION

- 2 Connect the power supply.

Interior: STANDARD version



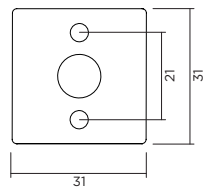
- 3 Mount inset on the back plate with side screws

- 4 Click cover over the inset

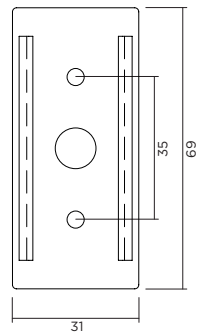
* For optional locking, unscrew the grub screw app. 3mm. The cover is now stable.

- 5 Mount the bulb with the PAR16 tool.

DOCUS MINI 1.0



DOCUS MINI 2.0



WEVER & DUCRÉ
LIGHTING

www.weverducre.com

INSTALLATION
INSTRUCTIONS