



Elektrictek Paul De Mautter CV
Industriepark 138 - Zone B
2220 Heist-op-den-Berg
BELGIUM

INPUT: 220-240V ~50/60Hz CLASS I Ⓢ
LAMP-HOUSE: LED-2x3W (Max.) 2x3051m
MATERIAL: ALUMINIUM

IP54 ⚡ CE

INSTALLATION INSTRUCTION

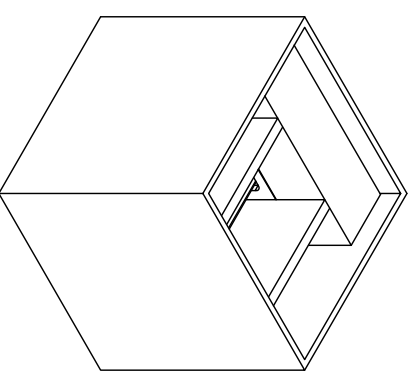
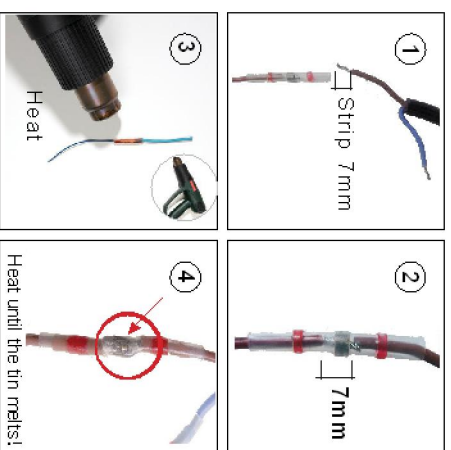
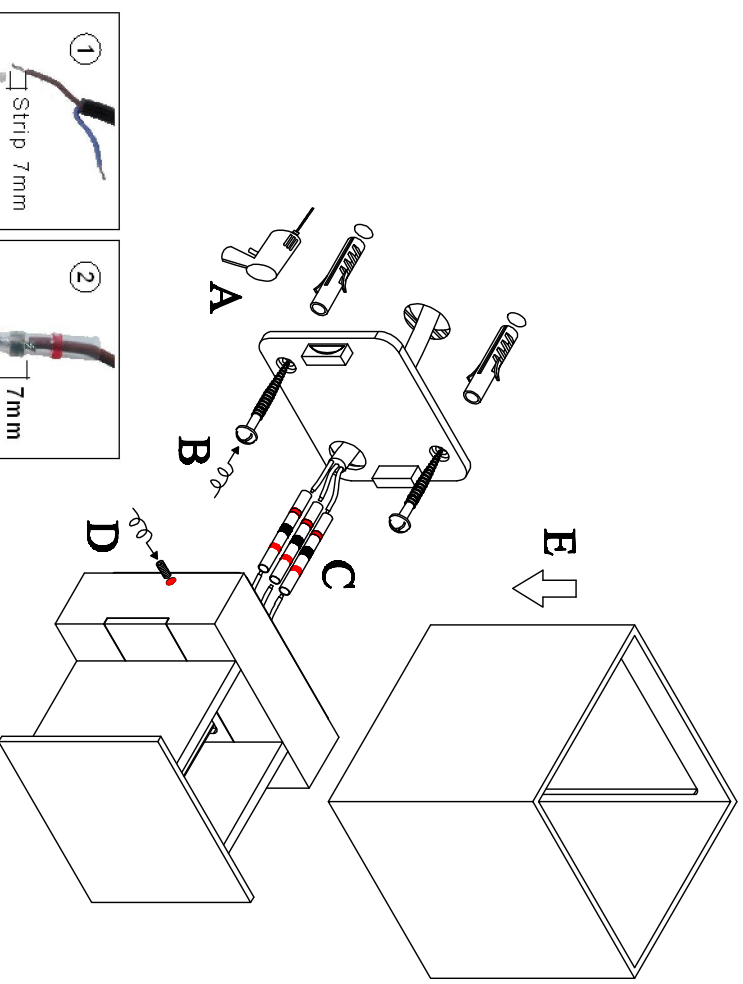
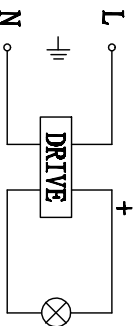
1. Before installing, make sure the power supply is switched off.
2. Follow the steps as the figure for installation or replacement of bulb Step.
 - A. after holding, pull out the wires.
 - B. fix the mounting bracket onto the wall with screws.
 - C. connect the wires by waterproof connectors.
 - D. fix the fixture to the mounting bracket with screws.
 - E. slide the lampshade to the fixture.
3. After finishing every step, tighten the screws, have the fixture fixed, and then connect the power supply.

CLEANING INSTRUCTION

1. Before cleaning, ensure that the power supply is switched off.
2. Use only a soft cloth to clean the lamp, dampened with mild cleanser if needed for resistant dirt.
3. Warning: do not use alcohol or other solvents.

CAUTION:

In case of any doubt, please contact the qualified electrician.



12013-01-WW
12013-02-WW
12013-04-WW