

# WIRO GLOBE

12-05-2016

## 1.0

QA60 max. 60W | E27 | 220-240VAC | 50-60Hz

CE IP20 960°C 0,9m

white texture	2281E0W0
black texture	2281E0B0
rusty + black texture	2281E0R0

for lamps see our catalogue

## 2.0

QA60 max. 60W | E27 | 220-240VAC | 50-60Hz

CE IP20 960°C 0,9m

black texture	2282E0B0
---------------	----------

for lamps see our catalogue

## 3.0

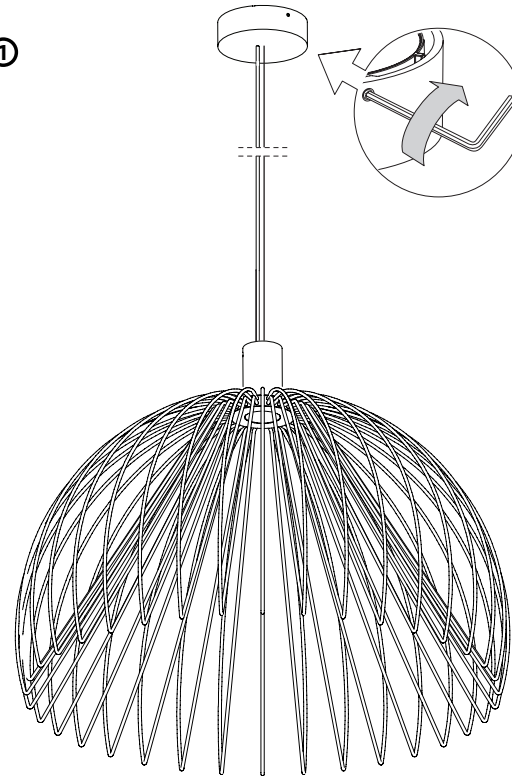
QA60 max. 60W | E27 | 220-240VAC | 50-60Hz

CE IP20 960°C 0,9m

white texture	2283E0W0
black texture	2283E0B0

for lamps see our catalogue

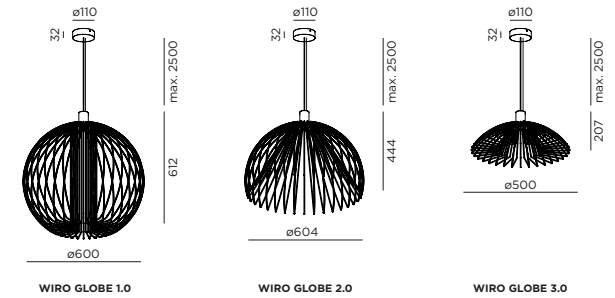
①



⑤



## DIMENSIONS

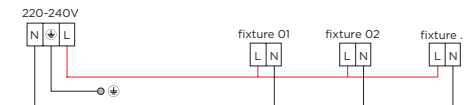


## ① MOUNTING INSTRUCTION

Mount the ceiling base on the ceiling

## ② POWER CONNECTION

PARALLEL CONNECTION



## ③ Secure strain relief

## ④ Adjust cable length

## ⑤ Insert lamp in the socket (lamp is not included)

## ⑥ Mount the fixture by screwing it on the socket. ONLY FOR WIRO GLOBE 1.0

For more detailed information see page 2.



WEVER & DUCRÉ  
LIGHTING

[www.weverducre.com](http://www.weverducre.com)

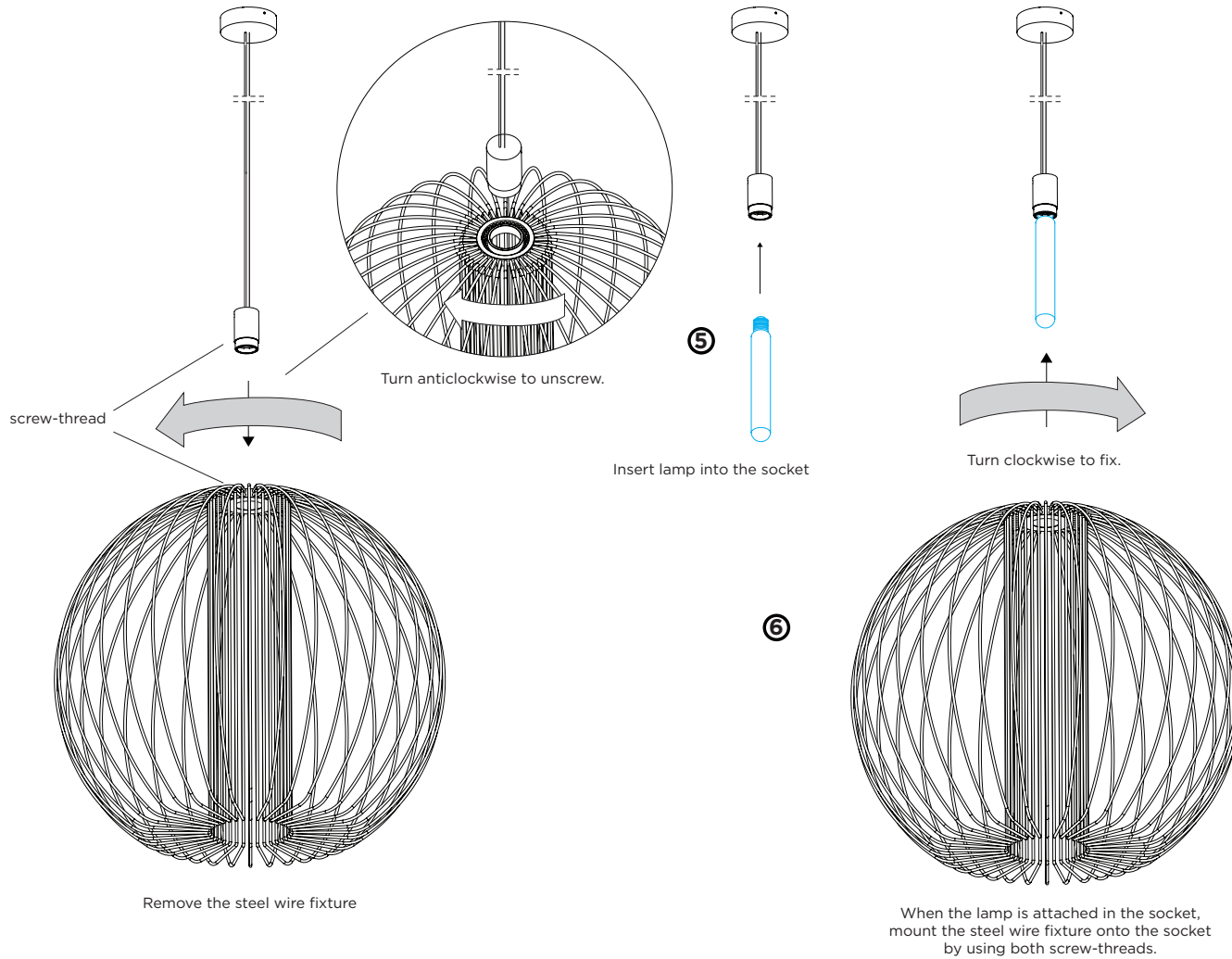
INSTALLATION  
INSTRUCTIONS

# WIRO GLOBE

## DETAILED MOUNTING INSTRUCTION

12-05-2016

### DETAILED MOUNTING INSTRUCTION.



- ⑤ Insert lamp in the socket (lamp is not included)
- ⑥ Mount the fixture by screwing it on the socket.  
**ONLY FOR WIRO GLOBE 1.0**

