

DEEPER FIX IP44

21-Jun-2019

1.0 LED

LED 7/10W | 350-500mA | 18Vf | COB 3-step | excl. power supply

CE IP44

white texture 152261W_
black texture 152261B_

LIGHT COLOUR

2700K | >90CRI | 440-590lm | 18Vf 3
3000K | >90CRI | 450-620lm | 18Vf 5
1800K-2850K | >95CRI | 280-370lm | 16Vf 9

ALWAYS USE

for power supplies see our catalogue

1.0 PAR16

Max. 35W | GU10 | 100-240VAC | 50-60Hz

CE IP44

OPTIONAL: PAR16 LED GU10 6W | phase-cut dim : 2700K 390lm | 3000K 410lm
PAR16 LED GU10 7W ambient white dim : 1800-2850K

white texture 152220W0
black texture 152220B0

1.0 MR16

Max. 35W | GU5.3 | 12V | excl. power supply

CE IP44

white texture 152210W0
black texture 152210B0

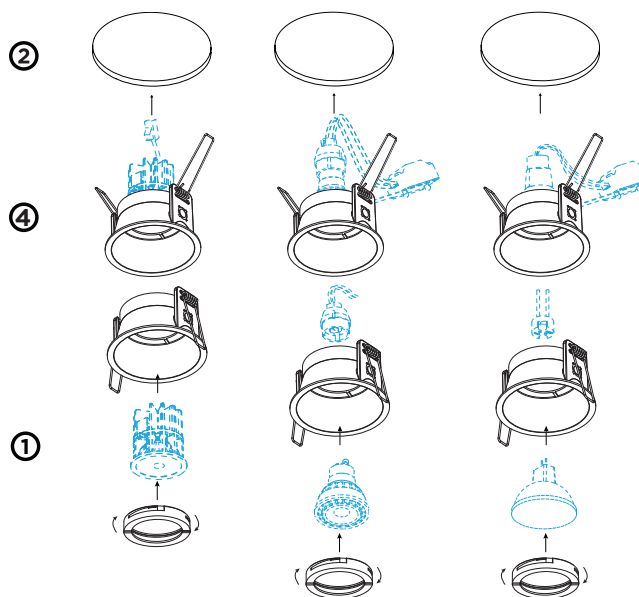
ALWAYS USE

for power supply see our catalogue

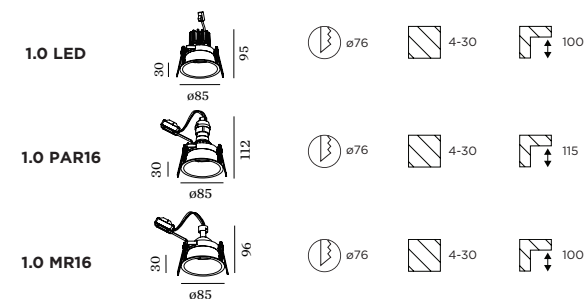
1.0 LED

1.0 PAR16

1.0 MR16



DIMENSIONS



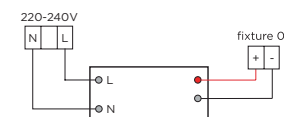
MOUNTING INSTRUCTION

- Put the illuminant in the assembled cover.
- Make a hole in the ceiling according to the prescribed dimensions.

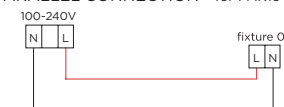
3 POWER CONNECTION

SERIAL CONNECTION - for LED

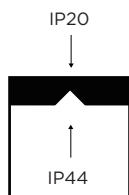
Always use POWER SUPPLY according to the specifications of the LED-module



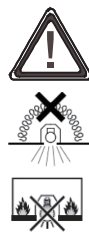
PARALLEL CONNECTION - for PAR16



- Turn the springs and insert the fixture in the ceiling hole



IP RATING when installed.
(Fixture is IP20 for the recessed part & IP44 at the visible side)



FOR HALOGEN LAMPS:

- The mounting height for the luminaire should be more than 2.5m.
- Luminaires not suitable for covering with thermally insulating material.
- Luminaires not suitable for direct mounting on normally flammable surfaces (suitable only for mounting on noncombustiblesurfaces)



WEVER & DUCRÉ
LIGHTING

www.weverducre.com

Wever & Ducré bvba Spinnerijstraat 99/21 8500 Kortrijk

**INSTALLATION
INSTRUCTIONS**