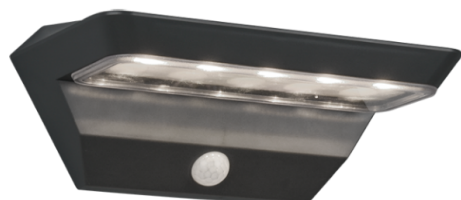


Wall lamp

MENDOZA – R22241142

incl. 1x SMD LED, 5W · 1x 200lm, 3000K



- **Motion sensor**
- **Rechargeable battery operated**
- **IP44**
- **Solar**

Material construction

Plastic · Anthracite

Product dimensions

Width: 22cm
Height: 9cm

Support & Download Links

[Manual](#)
[Drawing](#)
[Safety notes](#)
[Warranty Statement](#)

Technical data

Light source: SMD – LED (integrated)
Watt: 5W
Lumen: 1x 200lm
Kelvin: 3000K
Color rendering (CRI): > 80 CRI
Lifetime: 30000H
Switching cycles: 15000x ON/OFF

operating voltage: 230V ~ 50Hz
Protection grade: 3
IP classification: IP44

Dealer information

EAN Code: 4017807452662
Customs number: 94051040900

Packaging dimensions & weight

Quantities: 1

Width: 22,5cm
Height: 13,5cm
Depth: 10cm
Weight: 0,635kg